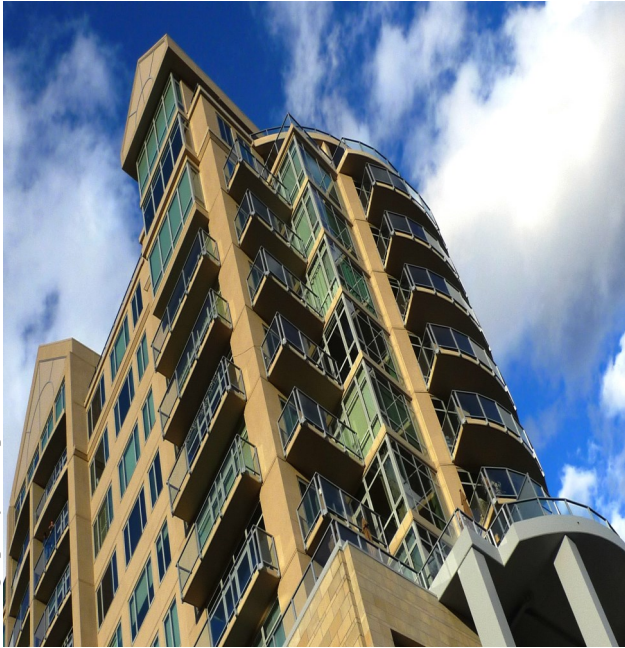


WILL YOUR NEW MULTIFAMILY PROPERTY BE IN COMPLIANCE?

The federal Fair Housing Act (FHA), as amended in 1988, puts into place seven design requirements to make new multifamily housing more accessible for people with disabilities. These requirements apply to most multifamily dwellings of four or more units, which were ready for first occupancy on or after March 13, 1991. The FHA design requirements must be incorporated in all ground floor units and all units on floors served by elevators.

Photograph by Phillip Zook



- ✓ **Requirement #1**
Accessible building entrance on an accessible route
- ✓ **Requirement #2**
Accessible and usable public and common-use areas
- ✓ **Requirement #3**
Accessible door into and within premises
- ✓ **Requirement #4**
Accessible route into and through the covered dwelling unit
- ✓ **Requirement #5**
Light switches, electrical outlets, thermostats, and other environmental controls in accessible locations
- ✓ **Requirement #6**
Reinforced bathroom walls at toilets, tubs, and showers for later installation of grab bars
- ✓ **Requirement #7**
Kitchen and bathroom designed to enable a wheelchair to maneuver

ACCESSIBLE HOUSING MAKES GOOD BUSINESS SENSE!

RESOURCES:

- **Fair Housing Accessibility First**
www.fairhousingfirst.org / (888) 341-7781 (V/TTY)
Technical Assistance and Training Opportunities
- **International Code Council (ICC)**
www.iccsafe.org
Information on the International Building Code
- **The Center for Universal Design**
College of Design, North Carolina State University, Raleigh, North Carolina
www.design.ncsu.edu / (800) 647-6777
General Information on Accessibility and Universal Design
- **Silver State Fair Housing Council**
www.ssfhc.org / (888) 585-8634 / Relay Nevada 711
General information and resources



Silver State Fair Housing Council (SSFHC) works to ensure equal housing opportunity for all residents of Nevada. SSFHC advocates for fair housing by providing a comprehensive program of outreach, education, and enforcement activities. By addressing the needs of housing consumers, housing providers, and local governments, SSFHC works to break down barriers to equal housing opportunity and build opportunities for community members to relate to each other as neighbors. In addition, SSFHC tracks multifamily building permits in Nevada and works to educate, architects, developers, engineers, and local jurisdictions about the FHA accessibility requirements.

The work that provided the basis for this campaign is supported by funding under a grant from the U.S. Department of Housing and Urban Development. The substance and findings of the work are dedicated to the public. The authors and presenters are solely responsible for the accuracy of the statements and interpretations contained in this training. Such interpretations do not necessarily reflect the views of the Federal Government.